



Inspire Action for Social Change

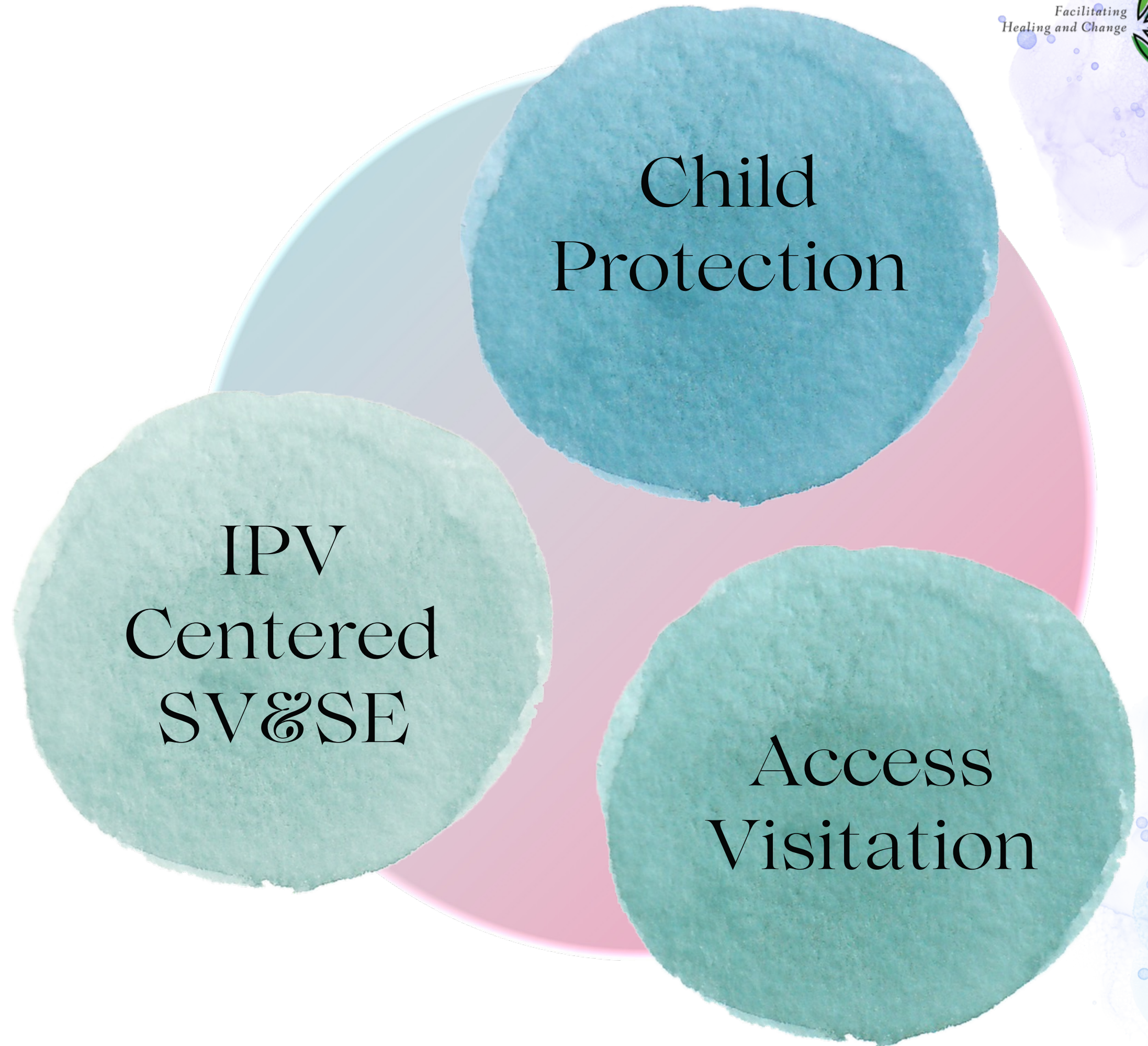
Specialized Session:
Building a Safer Community Response for Families Post-Separation

*OVW Justice for Families New Grantee Orientation
December 4, 2024*

Amrita Hanjrah, Beth McNamara, & Jennifer Rose

This project was supported by Grant No. 15JOVW-23-GK-05165-MUMU, awarded by the Office on Violence Against Women, U.S. Department of Justice. The opinions, findings, conclusions, and recommendations expressed are those of the authors and do not necessarily reflect the views of the Department of Justice, Office on Violence Against Women.

Evolution of Supervised Visitation & Safe Exchange





OVW Guiding Principles for Supervised Visitation and Safe Exchange

Guiding Principles

**Safe Havens:
Supervised Visitation
and Safe Exchange
Grant Program**



Office on Violence Against Women: Supervised Visitation & Safe Exchange Guiding Principles

GP I: Equal Regard for the Safety of Child(ren) and Adult Victims

GP II: Valuing Multiculturalism and Diversity

GP III: Incorporating an Understanding of Domestic Violence into Center Services

GP IV: Respectful and Fair Interaction

GP V: Community Collaboration

GP VI: Advocacy for Child(ren) and Adult Victims



Strategies of Conducting Supervised Visitation & Safe Exchange

Connect

Connect with every parent & child using services

Compassion

Lead with care & compassion

Safety

Support safety

Acknowledge

Acknowledge the humanity & unique life circumstances of each individual

Counteract

Counteract the experience and tactics of intimate partner abuse

Supervised Visitation & Safe Exchange in Context of Intimate Partner Abuse Is Designed To:

Provide a safe space for visit to happen

Interrupt harm related to reason family referred

Make visible behavior that poses a continued risk

Provide safety & predictability

Reduce risk of violence & harm for survivors

Provide opportunities for healing and change for parents and children

Supervised Visitation & Safe Exchange in Context of Intimate Partner Abuse Is **NOT** Designed To:

Reunify families

*Determine if a parent is safe outside
the visitation setting*

*Demonstrate quality of parenting or
evidence for final parenting arrangement*

Replace other necessary interventions

Work in isolation as the sole intervention

Force visits or exchanges to take place

*Intervene in parenting choices (outside of
interrupting risk and harm)*

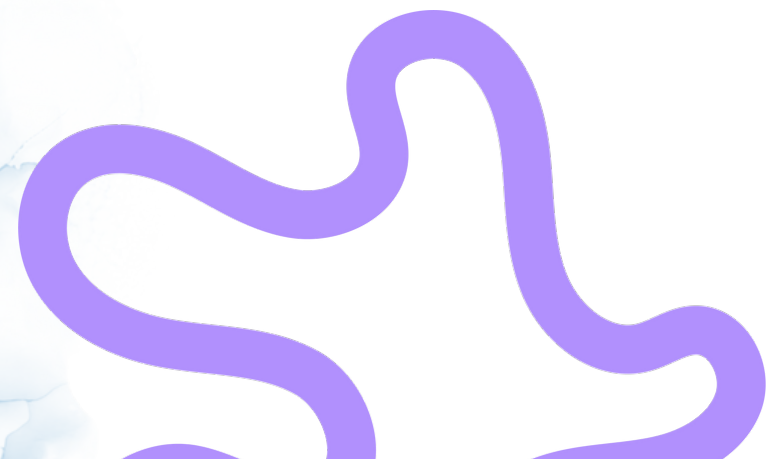
2 Hours During the Visit

2 Years Post-Separation

20+ Years

2-2-20

What's In & Out of Alignment **ACTIVITY**





Equal Regard for the Safety of Child(ren) and Adult Victims



Find something that is in alignment with the Guiding Principle of Equal Regard

Directions:

Find something that is NOT in alignment with the Guiding Principle of Equal Regard

Valuing Multiculturalism and Diversity

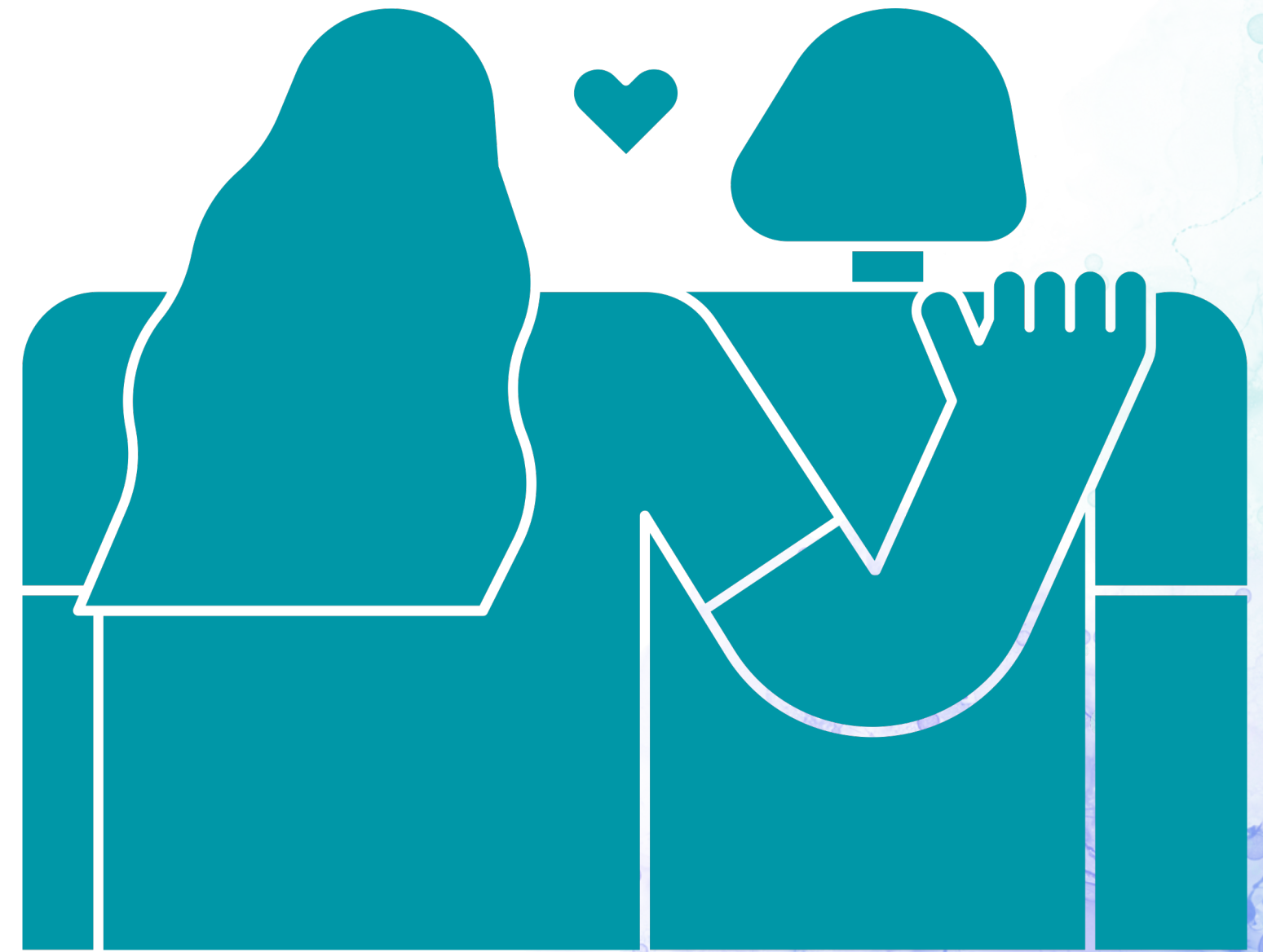


Find something that is in alignment with the Guiding Principle of Valuing Multiculturalism and Diversity

Directions:

Find something that is NOT in alignment with the Guiding Principle of Valuing Multiculturalism and Diversity

Incorporating an Understanding of Domestic Violence into Center Services



Find something that is in alignment with the Guiding Principle of Understanding DV

Directions:

Find something that is NOT in alignment with the Guiding Principle of Understanding DV

Respectful and Fair Interaction

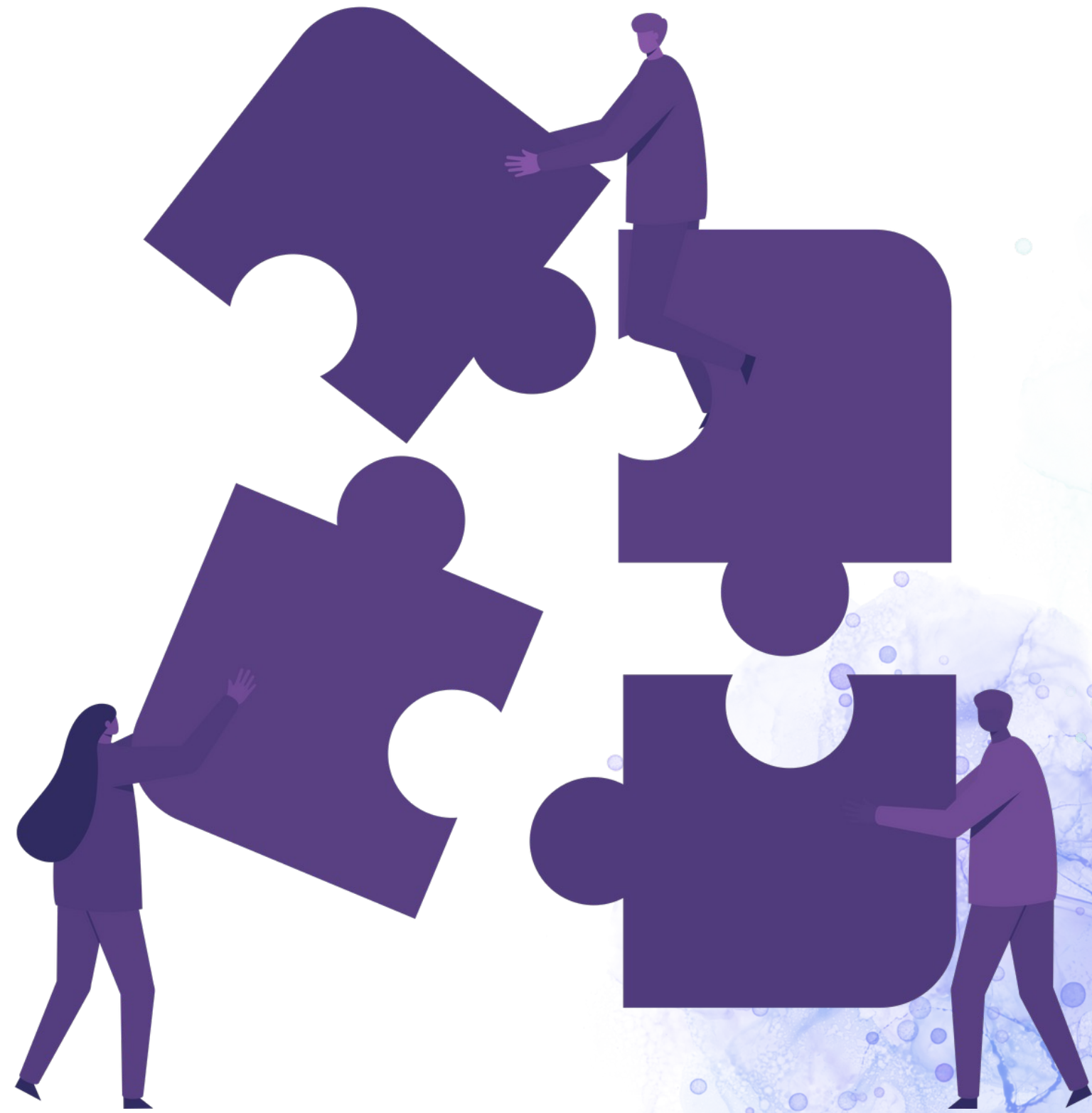


Find something that is in alignment with the Guiding Principle of Respectful & Fair Interaction

Directions:

Find something that is NOT in alignment with the Guiding Principle of Respectful & Fair Interaction

Community Collaboration



Find something that is in alignment with the Guiding Principle of Community Collaboration

Directions:

Find something that is NOT in alignment with the Guiding Principle of Community Collaboration

Advocacy for Children & Adult Victims



Directions:

Find something that is in alignment with the Guiding Principle of Advocacy for Children & Adult Victims

Find something that is NOT in alignment with the Guiding Principle of Advocacy for Children & Adult Victims



In & Out of Alignment Activity Large Group Discussion



Team Planning

To Strengthen our SVSE Services:

- 1) Identify three opportunities for exploration & refinement.
- 2) Identify three actionable steps your team can take.

Self-Reflection Questions

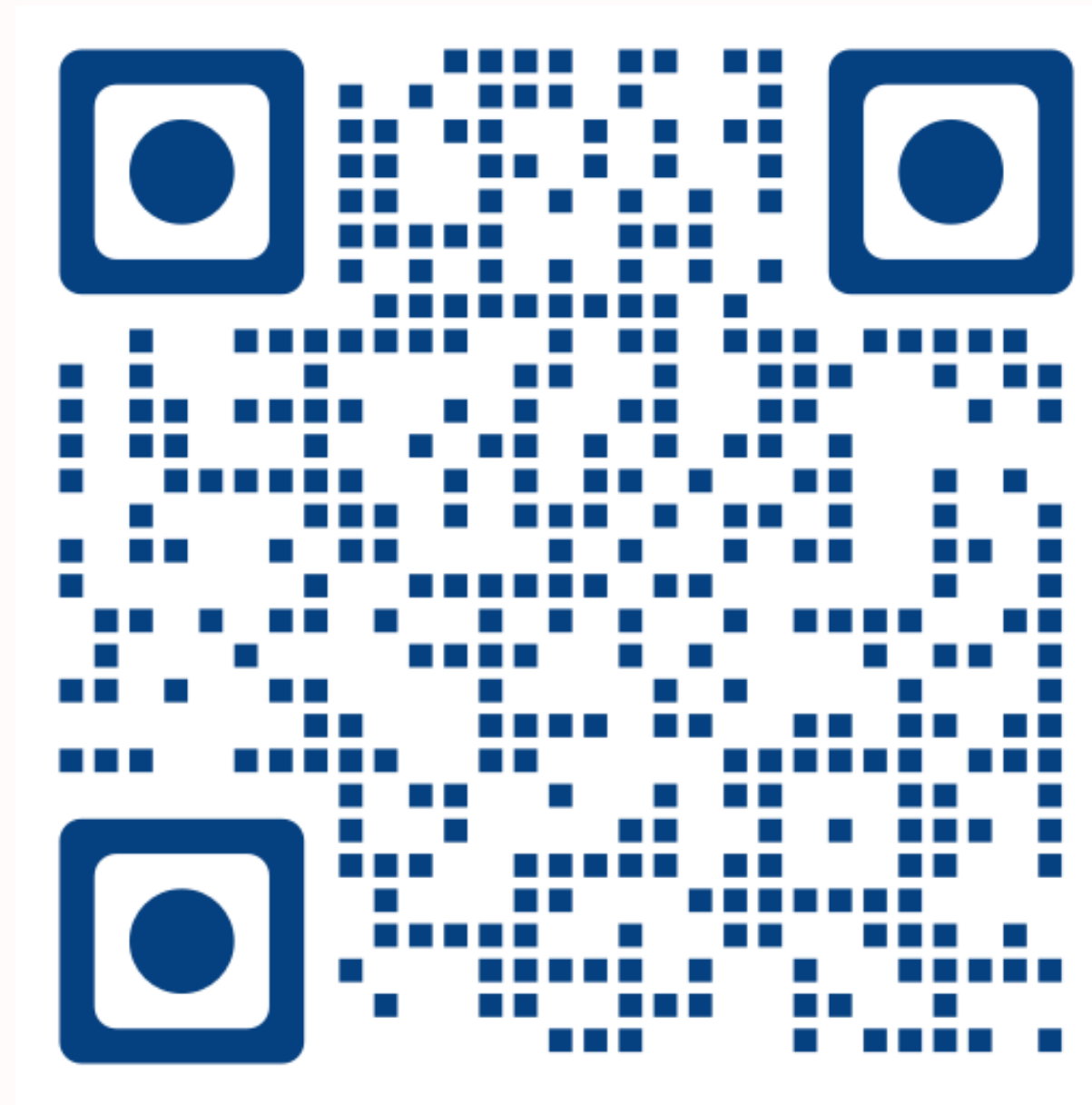
In your workbook, reflect on the following questions:



How will you use what you learned in this session to build a safer response for families post separation in your community?



Stay Connected to Inspire



Scan the QR Code to Link to Inspire's Website



Staff Contact Information

Beth McNamara: 406.558.9334 | beth@inspireactionforsocialchange.org

Jennifer Rose: 505.490.9058 | jennifer@inspireactionforsocialchange.org

Amrita Hanjrah: 312.952.4979 | amrita@inspireactionforsocialchange.org

www.inspireactionforsocialchange.org

Placeholder slides if needed

What does the **court** need from SVSE programs?

- *A clear policy for what information is collected and retained based on its role as an SV&SE provider*
- *Clear policy about how information is shared*
- *Communication with the court system about the program, process, and capacity*

What do SVSE programs need from the courts?

- *Communication about referral & basis for it*
- *Communication about guardrails for visits*
- *Orders that programs can accommodate (given process and capacity)*
- *Notice to parents of the basic process to expect*
- *Notice to parents that they must follow program rules*



Building Strong Court & Supervised Visitation Relationships

- Presence in the courthouse
- Regular and ongoing check-ins and meetings between SV programs and court personnel
- Transparency
- Cross-training between SV and the courts (observations & site visits)
- SV is a key partner in Coordinated Community Response meetings