



COORDINATED COMMUNITY RESPONSE APPROACH

LAYING THE FOUNDATIONS

Culturally Specific Campus Technical Assistance Providers

Takiva N. Bell and LaTanya Foust



Objectives

TODAY'S DISCUSSION

- Participants will identify what a Coordinated Community Response (CCR) is and What it is Not!
- Participants will explore the 4 Pillars of a Coordinated Community Response Team (CCRT).
- Participants will engage in a CCRT activity to explore and examine key Campus Partners and the Community Partners.





What is a Coordinated Community Response?

A coordinated community response (CCR) is an approach that communities or institutions use to achieve a shared goal or vision across various disciplines. Specific to the Office on Violence Against Women (OVW), a CCR is a multifaceted approach to addressing violence against women within a community, system, or institution.

What is a Coordinated Community Response Team (CCRT)?

A CCR Team is a multidisciplinary team of campus and community partners who meet regularly to assess, plan, and monitor campus prevention and response efforts.

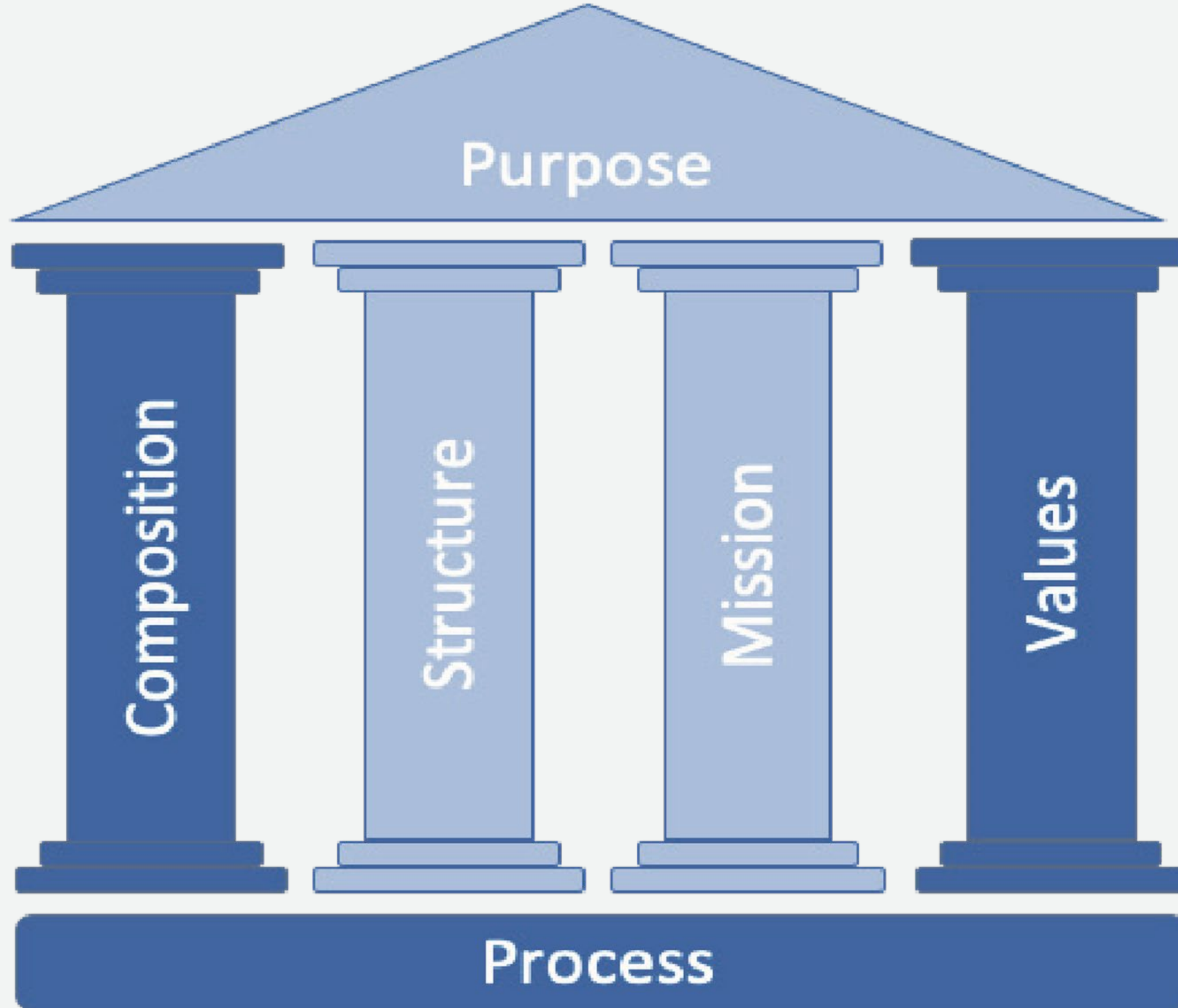
What is the purpose of a CCRT?

The purpose of the CCR Team is to engage key stakeholders to cultivate a collective leadership approach to developing trauma - informed, culturally relevant, multidisciplinary, and coordinated efforts to prevent and respond to domestic violence, dating violence, sexual assault, and stalking.



A COORDINATED COMMUNITY RESPONSE TEAM IS NOT TITLE IX

It is vital to recognize that the CCRT is not a Title IX compliance team or emergency response team that responds to individual incidents.



FOUR PILLARS OF A COORDINATED COMMUNITY RESPONSE TEAM



Activity

Who is on your CCRT?

Understanding the Needs of Your Campus



1. Does your CCRT have diverse representation?
2. Does your CCRT promote intercultural exchange?
3. Does your CCRT represent key partners to help bridge gaps in the unmet needs of your campus?

Shifting Existing Teams to Support Culturally Specific Frameworks or Approaches:

What is needed to do this?

Approaches to Consider

As a wrap up Things are some things to consider.



Who are the Culturally Specific Partners Needed?



Who do you currently have as partners?
Who is missing?



They are key partners to creating a Culturally Responsive CCR Team

Approaches to Consider

Something else to consider... we want to make sure we are serving our underserved students.

Identify Culturally Specific Students' Needs on your Campus

How do we address both predominant student populations and those that are underserved on your campus?

How do you balance this?

This will be specific to each campus. This will be a process and absolutely will take a collaborative effort to ensure this. Please utilize your TA and program directors.

Technical Support

The support of OVW and the Technical Assistance Providers will help your Campus and CCRT:

Cross training is essential to success. helps everyone

- IDENTIFY

- PRIORITIZE

- DEVELOP

- COMPLETE
- DEFINE

- ASSESS
- TRAINING



Technical Assistance Providers NORTHSTAR TEAM

Levette K. Johnson

lkelly@mscasa.org

Takiva Bell

taspecialist@mscasa.org

LaNette Sykes

onlineresource@mscasa.org

Monika Johnson - Hostler

monika@nccasa.org

Tracy Wright

tracy@nccasa.org

LaTanya Foust

latanya@nccasa.org

Reference and Acknowledgments

Building Coordinated Community Response Teams to Address Domestic Violence, Dating Violence, Sexual Assault, and Stalking on Campus:

A Toolkit for Institutions of Higher Education Fall 2020

This toolkit was developed in partnership between the University of Colorado Denver's Center on Domestic Violence, technical assistance provider for Coordinated Community Response (CCR) and Casa de Esperanza, technical assistance provider for working with the college student population. Both organizations serve grantees funded by the Department of Justice, Office on Violence Against Women (OVW) Campus Program. We are grateful for the leadership and support of the OVW Campus Program Unit.

OVW was created in response to the passage of the Violence Against Women Act (VAWA) in 1994 to provide federal leadership in developing the national capacity to reduce violence against women and administer justice for, and strengthen services to, survivors of domestic violence, dating violence, sexual assault, and stalking. Since 1998 the OVW Campus Program has been supporting colleges and universities by building their capacity for implementing comprehensive, coordinated responses to reduce domestic violence, dating violence, sexual assault, and stalking.

This toolkit is designed to provide institutions of higher education with effective strategies for developing a coordinated community response to address domestic violence, dating violence, sexual assault, and stalking (DVSAS) on campus. These strategies are based on the work of Campus Program grantees that received financial support through the Department of Justice, OVW Grants to Reduce Domestic Violence, Dating Violence, Sexual Assault and Stalking on Campus Program (Campus Program).

The technical assistance team who developed this toolkit includes:

Shannon Collins, LCSW

Barbara Paradiso, MPA

