

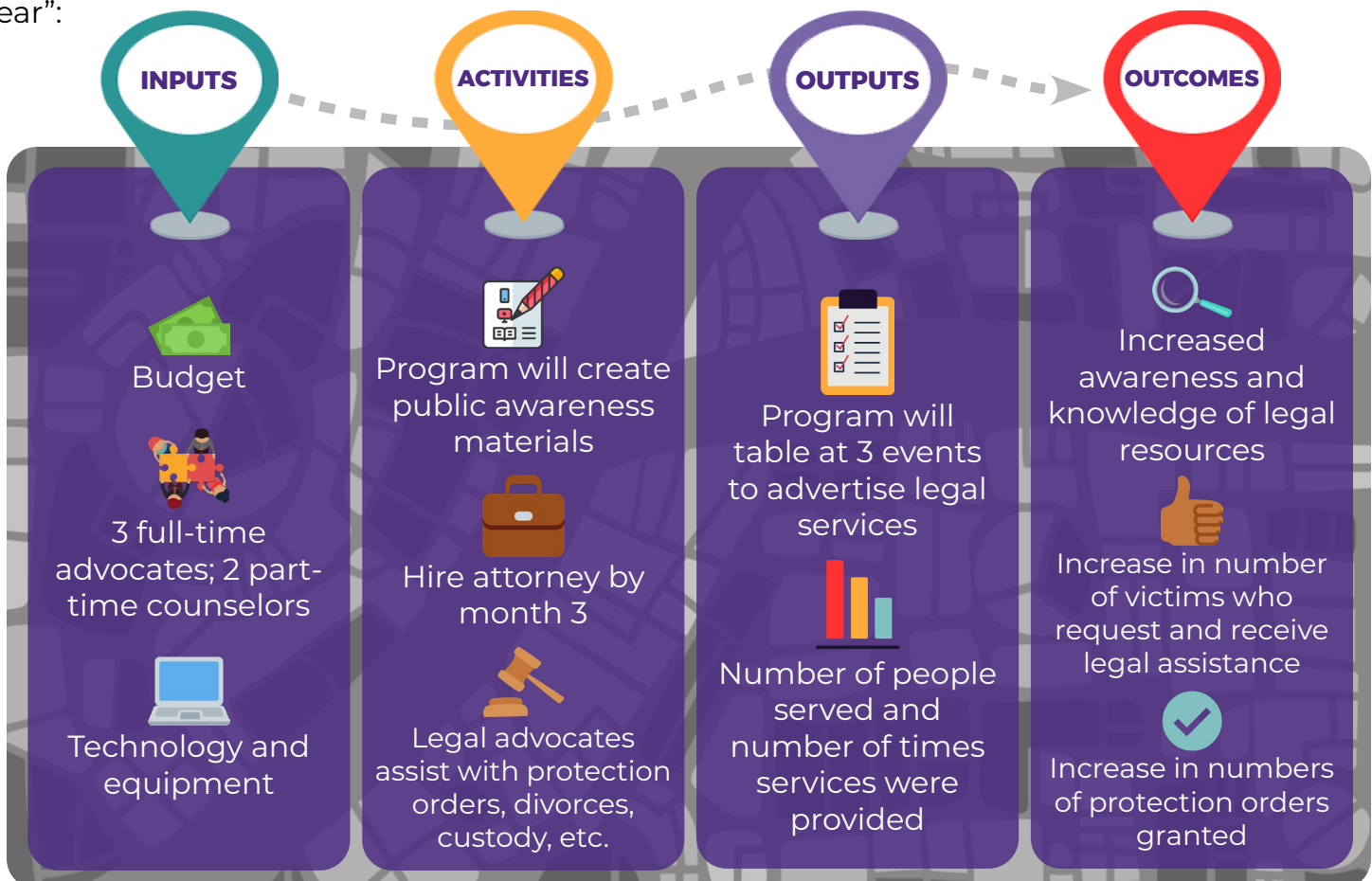
Logic models are visual tools that illustrate and communicate how a program should work. They can be thought of as road maps from a program’s resources and activities to its output and intended outcomes. They should be updated to reflect any changes in a program, and should be and referred to frequently to ensure a program is progressing as expected.

DEFINITIONS:

- **Goals:** measurable long-term statements that explain what a program is trying to achieve; provide the “why” behind activities; are accomplished when the objectives are fully met;
- **Objectives:** specific statements of the desired immediate or direct outcomes of the program that support the accomplishment of the goal; they are generally brief.
- **Inputs:** resources a program uses; inputs can include staffing, budget, collaborative partners, etc.
- **Activities:** specific steps taken to directly correspond with each of the identified objectives.
- **Outputs:** the results of activities performed; are units of service (e.g., number of people trained, number of people served, etc.); This information is usually recorded in grant progress reports.
- **Outcomes:** are short and long-term, measurable direct results of a program’s activities; they indicate whether a program is meeting their goal(s); it is anticipated that shorter term outcomes lead to long-term outcomes; they illustrate a program’s impact.

EXAMPLE:

The Deer Nation might create the logic model below for their dual DV/SA program, based on the goal to “increase safety for Native victims of domestic violence and sexual assault” and an objective might be to “provide a variety of legal services and assistance to victims in the next year”:

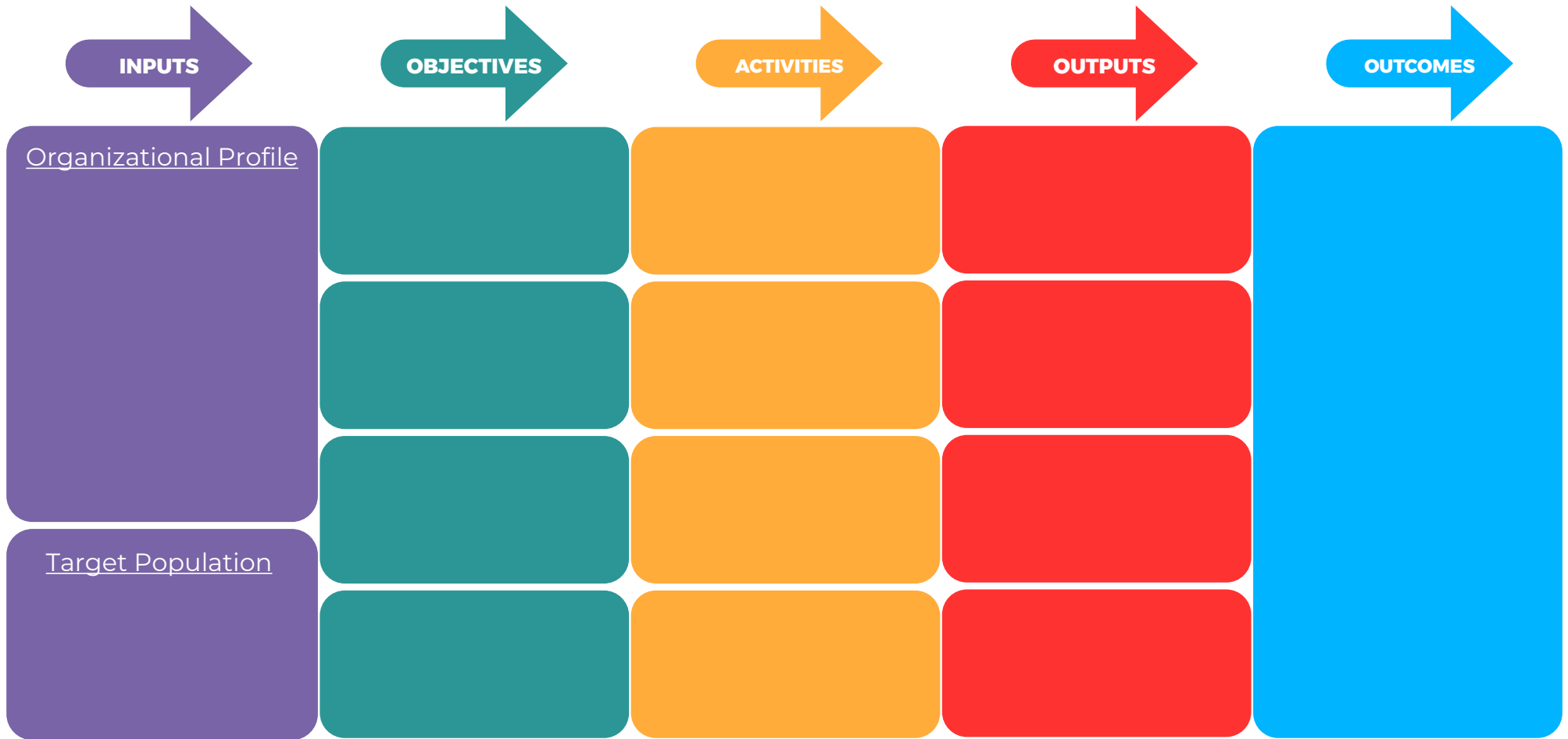


Continue on the back side of the page for a logic model template.

SITUATION:



GOAL:



ASSUMPTIONS

Addressing violence against Native women is complex work which requires specialized knowledge, strong collaborations, and an understanding of sovereignty and Indigenous ways. _____ possesses such attributes and is a powerful community resource for our Native women and children who are victims of domestic violence, dating violence, sexual assault, stalking, and sex trafficking.